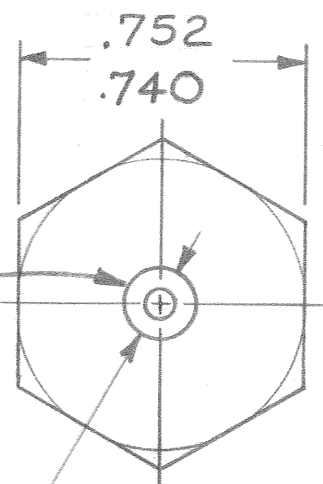
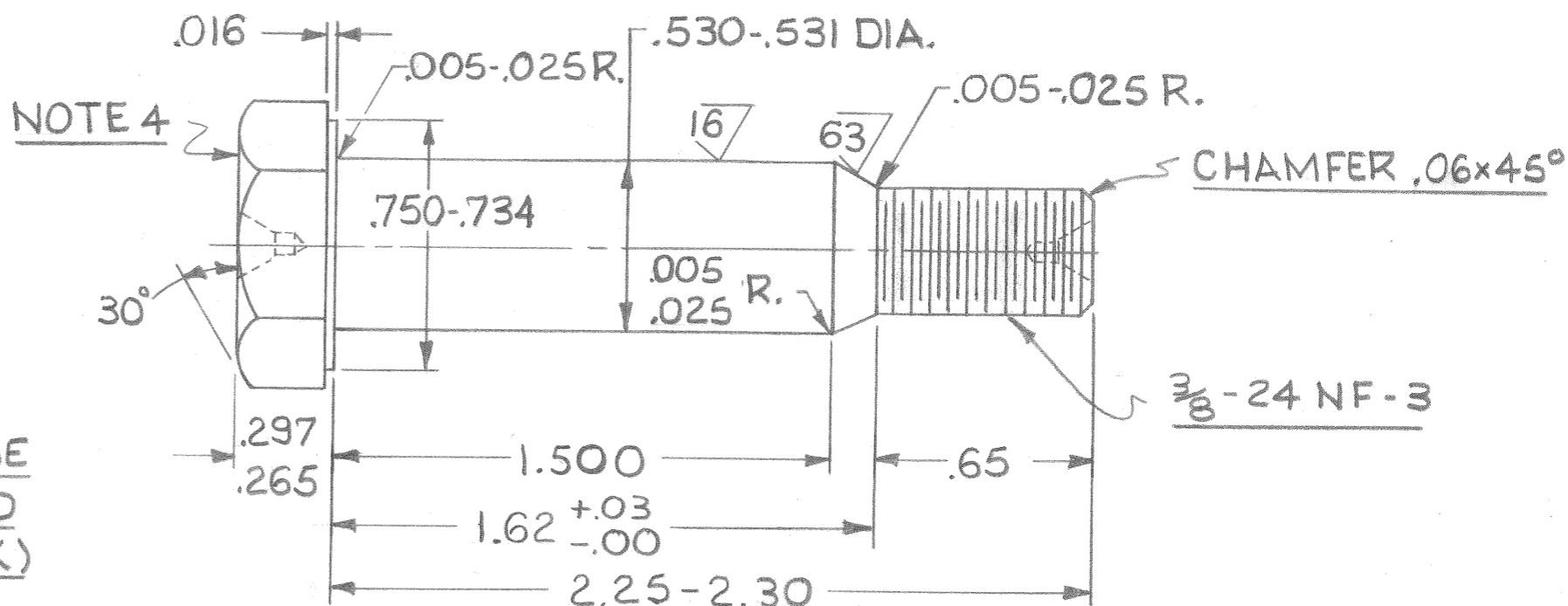


OPTIONAL: COUNTERSINK BOTH ENDS FOR MACHINING ON CENTERS



.187 MAX. (USE #2 COMBINED DRILL & CSK)



NOTE:

1. 100% MAGNAFLUX REQUIRED ON FINISHED BOLT
2. MAY BE MACHINED FROM AN179-22A
3. MATERIAL IS AIRCRAFT QUALITY STEEL
H. T. 125,000 PSI MIN. MAY BE 2330, 4130,
8630 OR OTHER STEEL ACCEPTABLE FOR "AN" BOLT
4. IF "AN" BOLT IS USED REMOVE MARKS
FROM HEAD & STAMP HEAD FOR MAGNAFLUX,
HEAT TREAT AND ACCEPTANCE
5. BREAK ALL SHARP EDGES
6. BOLTS SHALL BE FREE FROM ALL
HANGING BURRS & SLIVERS WHICH
MIGHT BECOME DISLODGED IN USAGE

SEE NOTES 2, 3 & 4

NO. PER ASBY.		ASSEMBLY	PART NO.	PART NAME	STOCK SIZE	MATERIAL SPECIFICATION	HEAT TREAT	U. T. S. P. S. I.	FINISH	UNIT WT.	
			26B441-1	MAIN PIN	3/4 HEX. X 2.7	STL. BAR 8740	COND'F	125000			
					LIMITS UNLESS OTHERWISE SPECIFIED				CLASSIFICATION		
					ANGULAR	FRACTIONAL	DECIMAL				
							.xx = ±.03				
							.xxx = ±.010				
					REPLACES	REPLACED BY	APP.				
							LOFT				
							PR. ENG.				
							STRESS				
					1-264-1	26G900	CHECKED				
LET.	CHANGE	SERIAL	DATE	BY	APP.	MODEL	REQ'D	ASSEMBLY	DRAWN	SCALE	
									W.E.F.	10.21.63 DOUBLE	
SCHWEIZER AIRCRAFT CORP.					MAIN PIN					REV.	
ELMIRA, NEW YORK					WING ATTACHMENT					26B441	